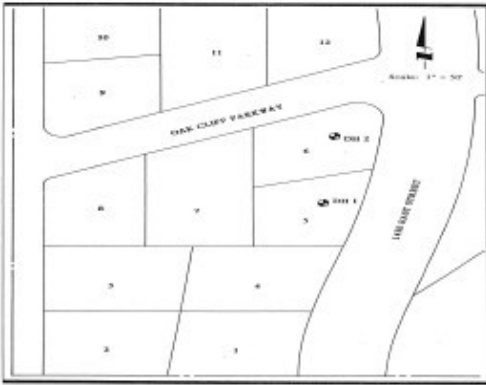


PRUDENTIAL UTAH REAL ESTATE

1480 N 1450 E, MLS#: 880861

\$104,900



Contact

Prudential Utah Elite Real Estate |
Orem

John Clayton

Mobile: (801) 427-9833

Listing Provided By:

List Office: PRUDENTIAL UTAH
ELITE REAL ESTATE

Description

Prime Residential Lot With Extensive Views Over BYU & The Valley. Lot Is Sold With Adjoining Lot Tax ID 480010009, Price \$39,000, Lot Size 0.20-Has Proposed Access Off The Extension Of 1450E (See Plat Map For Details). Bring All Offers.

Listing Information

Acres	0.22
Taxes	\$257
Area	NE
Gas	1
Water	1
Sewer	16
Lot Number	6
Property Type	LAND
Zoning	Res

School Information

School District	38
Elem. School	38132
Middle School	38404
High School	38712